

# X-Centric Gonzatonics

## Pentatonic b2 Modes

5 Pentatonic modes - generated from a common tone  
Twelve Keys - Bergonzi Formula #1

©2014  
bobbysternjazz.com.

C: i. C pentatonic b2 ii. B pentatonic b2 iii. All Rights Reserved



Ab pentatonic b2 iv. F pentatonic b2 v. Eb pentatonic b2



C#(Db): i. C# pentatonic b2 ii. C pentatonic b2 iii.



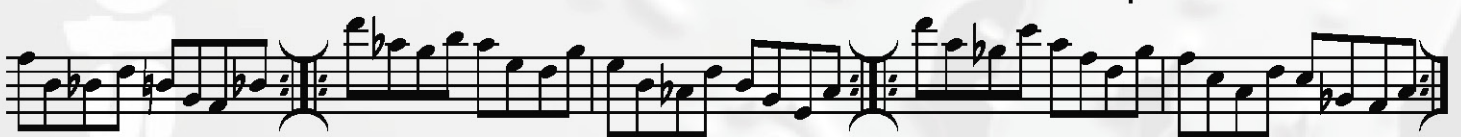
A pentatonic b2 iv. F# pentatonic b2 v. E pentatonic b2



D: i. D pentatonic b2 ii. C# pentatonic b2 iii.



Bb pentatonic b2 iv. G pentatonic b2 v. F pentatonic b2



Eb: i. Eb pentatonic b2 ii. D pentatonic b2 iii.



B pentatonic b2 iv. Ab pentatonic b2 v. Gb pentatonic b2



# X-Centric Gonzatonics Pentatonic b2 Modes - Bergonzi Shape #1

©2014

[bobbysternjazz.com](http://bobbysternjazz.com)

All Rights Reserved

**E:** i. *E pentatonic b2* ii. *E<sup>b</sup> pentatonic b2* iii.

This block contains the first two musical staves. The first staff shows the E pentatonic b2 mode (i) and the Eb pentatonic b2 mode (ii). The notes are: E, F#, G, A, B for E mode; and Eb, F, G, Ab, Bb for Eb mode. The second staff continues the sequence with the C pentatonic b2 mode (iv) and the A pentatonic b2 mode (v).

*C pentatonic b2* iv. *A pentatonic b2* v. *G pentatonic b2*

This block contains the second and third musical staves. The second staff shows the C pentatonic b2 mode (iv) and the A pentatonic b2 mode (v). The third staff shows the G pentatonic b2 mode (vi).

**F:** i. *F pentatonic b2* ii. *E pentatonic b2* iii.

This block contains the fourth and fifth musical staves. The fourth staff shows the F pentatonic b2 mode (i) and the E pentatonic b2 mode (ii). The fifth staff shows the C# pentatonic b2 mode (iv) and the Bb pentatonic b2 mode (v).

*C# pentatonic b2* iv. *Bb pentatonic b2* v. *Ab pentatonic b2*

This block contains the sixth and seventh musical staves. The sixth staff shows the C# pentatonic b2 mode (iv) and the Bb pentatonic b2 mode (v). The seventh staff shows the Ab pentatonic b2 mode (vi).

**F#:** i. *F# pentatonic b2* ii. *F pentatonic b2* iii.

This block contains the eighth and ninth musical staves. The eighth staff shows the F# pentatonic b2 mode (i) and the F pentatonic b2 mode (ii). The ninth staff shows the D pentatonic b2 mode (iv) and the B pentatonic b2 mode (v).

*D pentatonic b2* iv. *B pentatonic b2* v. *A pentatonic b2*

This block contains the tenth and eleventh musical staves. The tenth staff shows the D pentatonic b2 mode (iv) and the B pentatonic b2 mode (v). The eleventh staff shows the A pentatonic b2 mode (vi).

**G:** i. *G pentatonic b2* ii. *F# pentatonic b2* iii.

This block contains the twelfth and thirteenth musical staves. The twelfth staff shows the G pentatonic b2 mode (i) and the F# pentatonic b2 mode (ii). The thirteenth staff shows the Eb pentatonic b2 mode (iv) and the C pentatonic b2 mode (v).

*E<sup>b</sup> pentatonic b2* iv. *C pentatonic b2* v. *Bb pentatonic b2*

This block contains the fourteenth and fifteenth musical staves. The fourteenth staff shows the Eb pentatonic b2 mode (iv) and the C pentatonic b2 mode (v). The fifteenth staff shows the Bb pentatonic b2 mode (vi).

# X-Centric Gonzatonics Pentatonic b2 Modes - Bergonzi Shape #1

©2014  
bobbysternjazz.com.  
All Rights Reserved

**A<sup>b</sup>:** i. *Ab maj. pentatonic* ii. *G pentatonic b2* iii.

*E maj. pentatonic* iv. *Db maj. pentatonic* v. *B maj. pentatonic*

**A:** i. *A maj. pentatonic* ii. *Ab pentatonic b2* iii.

*F pentatonic b2* iv. *D pentatonic b2* v. *C pentatonic b2*

**B<sup>b</sup>:** i. *Bb pentatonic b2* ii. *A pentatonic b2*

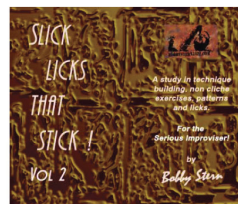
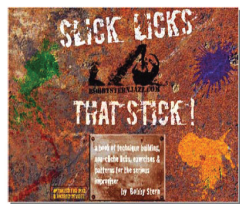
*F# pentatonic b2* iv. *Eb pentatonic b2* v. *Db pentatonic b2*

**B:** i. *B pentatonic b2* ii. *Bb pentatonic b2* iii.

*G pentatonic b2* iv. *E pentatonic b2* v. *D pentatonic b2*

Expand Your Improv Vocabulary!

Double Your Slickness



Available for Immediate Download!

Exclusively from

[www.bobbysternjazz.com](http://www.bobbysternjazz.com)

bob