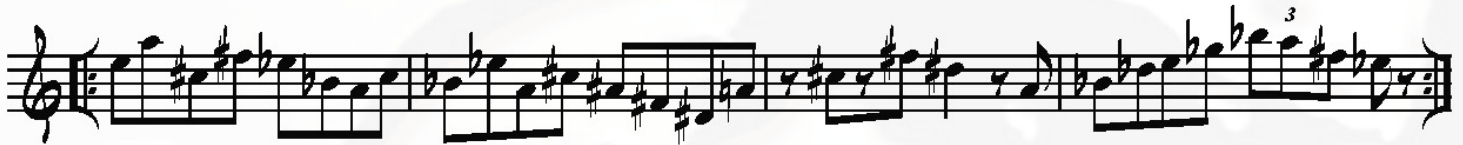


Diminished Scale Hexatonic Line

Triad Pair - One Minor & One Major Triad, a Tritone Apart

©2014 bobbysternjazz.com
All Rights Reserved

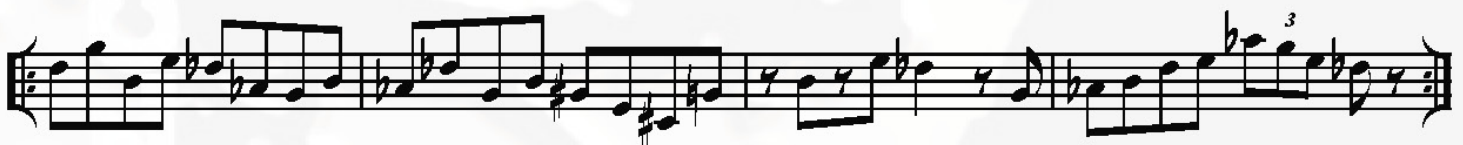
$E^b7\#9$ (E^b MI & A \sharp MA)



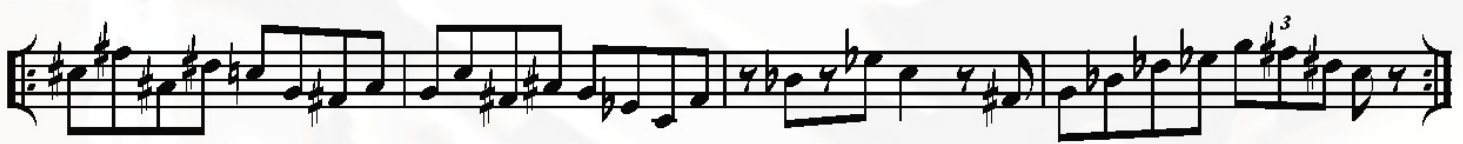
$D7\#9$ (D \sharp MI & A \flat MA)



$D^b7\#9$ (D^b MI & G \sharp MA)

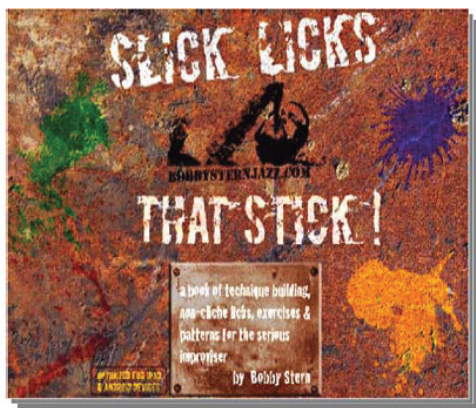


$C7\#9$ (C \sharp MI & F \sharp MA)



Expand Your Improv Vocabulary!

Double Your Slickness



Available for Immediate Download!

Exclusively from

www.bobbysternjazz.com